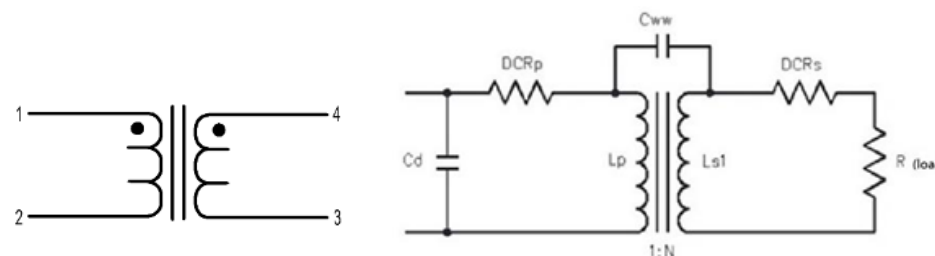


TEST CONDITIONS

Inductance: 100 kHz , 0.1 Vrms , series
Leakage Inductance: 100 kHz , 0.1 Vrms , series
Interwinding Capacitance: 100 kHz, 0.1 Vrms
DCR: Measured at 25°C
Cd: Measured by HP4194A equivalent A on primary



EQUIPMENTS: 4194A, 4284A, HOIKI 3541

Part Number	Lp (1-2)	Ls (4-3)	DCR (1-2)	DCR (4-3)	Cd	Cww1 (4-3)-(1,2)	SRF (1-2)	LLs (4-3) Shorted (1-2)	Turn Ratio
	<i>uH Typ</i>	<i>uH Typ</i>	Ω <i>Typ</i>	Ω <i>Typ</i>	<i>pF Typ</i>	<i>pF Typ</i>	<i>MHz Typ</i>	<i>nH Typ</i>	4-3:1-2
XT01	109	110	0.217	0.218	1.63	5.92	15.49	93	1:1
XT02	216	215	0.265	0.266	1.59	13.60	10.47	98	1:1
XT03	53	53	0.081	0.081	2.78	1.03	18.20	387	1:1
XT04	146	147	0.098	0.098	1.60	3.42	12.30	48	1:1