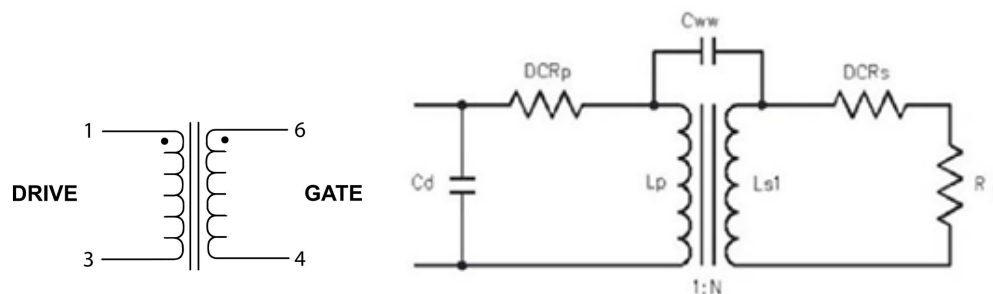


## TEST CONDITIONS

**Inductance:** 100 kHz , 0.1 Vrms , series  
**Leakage Inductance:** 100 kHz , 0.1 Vrms , series  
**Interwinding Capacitance:** 100 kHz, 0.1 Vrms  
**DCR:** Measured at 25°C  
**Cd:** Measured by HP4194A equivalent A on primary



**EQUIPMENTS:** 4194A, 4285A, 4284A, HOIKI 3541

Part Number	Lp (1-3)	Ls (6-4)	DCR (1-3)	DCR (6-4)	Cd	Cww1 (6,4)-(1,3)	SRF (1-3)	LLs (1-3) Shorted (6-4)	Turn Ratio
	<i>uH Typ</i>	<i>mH Typ</i>	<i>mΩ Typ</i>	<i>mΩ Typ</i>	<i>pF Typ</i>	<i>pF Typ</i>	<i>MHz Typ</i>	<i>uH Typ</i>	<i>1-3:6-4</i>
GT17005	272	3.21	406	788	50.86	1.33	1.34	0.11	1:3.5