

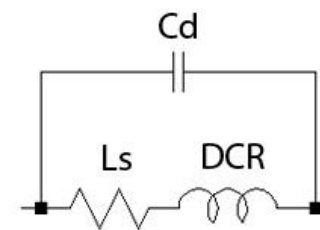
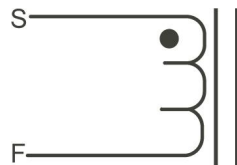
TEST CONDITIONS:

Inductance: 100kHz , 1Vrms , Series

DCR: Measured at 25 °C

Cd: Measured by HP4194A equivalent A

EQUIPMENTS: 4194A, 4285A, 4284A, HOIKI 3541



| Part Number | Ls | S.R.F | DCR | Cd |
|-------------|-----------------|------------------|-----------------|-----------------|
| | <i>uH, Typ.</i> | <i>MHz, Typ.</i> | <i>mΩ, Typ.</i> | <i>pF, Typ.</i> |
| 1D31A-100M | 10.02 | 19.05 | 5.1 | 6.34 |
| 1D31A-120M | 11.75 | 17.10 | 5.1 | 6.82 |
| 1D31A-150M | 14.79 | 12.80 | 5.7 | 9.73 |
| 1D31A-180M | 17.53 | 13.80 | 5.0 | 6.83 |
| 1D31A-220M | 21.86 | 10.00 | 5.7 | 10.78 |