

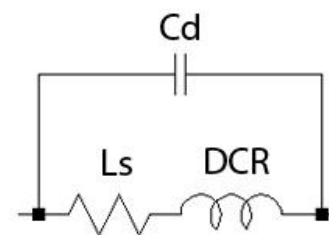
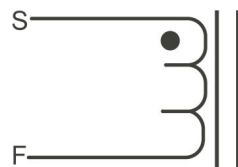
### TEST CONDITIONS:

**Inductance:** 1kHz , 1Vrms , Series

**DCR:** Measured at 25 °C

**Cd:** Measured by HP4194A equivalent A

**EQUIPMENTS:** 4194A, 4285A, 4284A, HOIKI 3541



| Part Number | Ls              | S.R.F            | DCR             | Cd              |
|-------------|-----------------|------------------|-----------------|-----------------|
|             | <i>uH, Typ.</i> | <i>MHz, Typ.</i> | <i>mΩ, Typ.</i> | <i>pF, Typ.</i> |
| 1D14A-100M  | 9.97            | 24.18            | 7.3             | 3.75            |
| 1D14A-150M  | 14.91           | 21.70            | 13.8            | 3.56            |
| 1D14A-220M  | 21.61           | 16.60            | 12.6            | 3.82            |
| 1D14A-330M  | 33.00           | 13.50            | 13.7            | 3.76            |