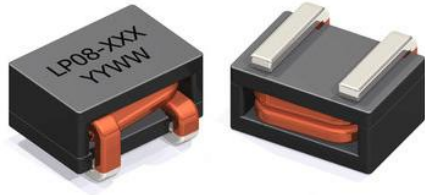


LP08 Series

SMT High Current Inductors



- Height: 6.22 mm (Max)
- Footprint: 10.92 mm x 8.0 mm (Max)
- I_{SAT} Current Rating: Up to 45A
- Frequency Range: Up to 1MHz
- Low Cost Design
- Suitable for Pick & Place Applications

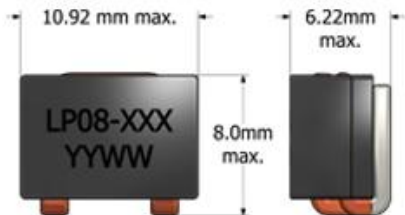
APPLICATIONS

Voltage Regulation Modules
 High Frequency, High Current
 Switching Power Supplies
 Synchronous Buck DC/DC
 Converters

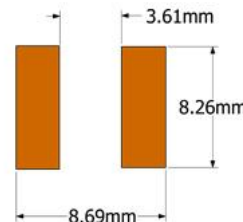
PACKAGING

Reel Diameter: 13"
 Reel Width: 24 mm
 Pieces/Reel: 600

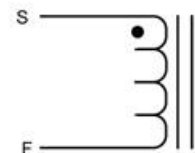
Mechanical Drawing



Recommended PCB Layout



Schematic



Electrical Specifications @ 25°C - Operating Temperature Range¹: -40°C to +130°C

Part Number	Inductance, L_s ² (nH, $\pm 15\%$)	DCR (m Ω , $\pm 8\%$)	I_{SAT} ³ (A _{DC})	I_{DC} ⁴ (A _{DC})
LP08-211	210	0.58	45	38
LP08-271	270	0.58	35	38
LP08-331	330	0.58	31	38

- Operating Temp. Range:** The combination of ambient temperature and temperature rise.
- Inductance:** Tested at 1MHz, 0.1 V_{RMS}
- I_{SAT} :** DC Current through the winding to cause a 15% (Nom) drop in inductance at 25°C ambient.
- I_{DC} :** DC Current through the winding to cause 40°C temperature rise at 25°C ambient. PCB layout, trace thickness and width, airflow and proximity to other devices will affect the temperature rise.



Specifications subject to change without prior notice.

TEL.: 800-729-2099

www.icecomponents.com

January 24 2021 - LP08 Series