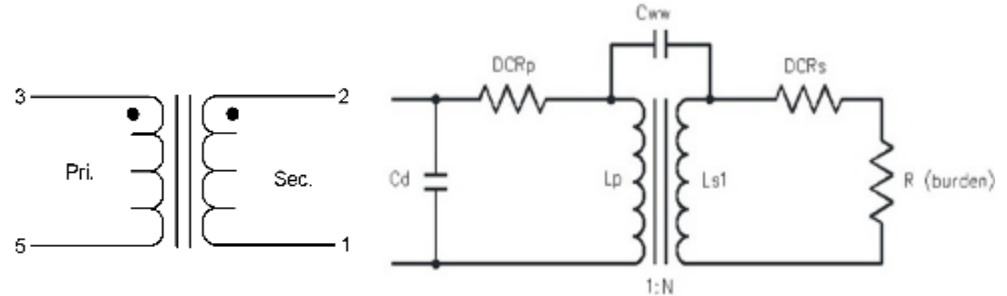


## TEST CONDITIONS

- Inductance:** 10 kHz, 0.1 Vrms, series  
*CT05-1000:* 1 kHz, 0.1 Vrms, series
- Leakage Inductance:** 10 kHz, 0.1 Vrms, series
- Interwinding Capacitance:** 100 kHz, 0.1 Vrms
- DCR:** Measured at 25°C
- Cd:** Measured by HP4194A equivalent A on secondary



**EQUIPMENTS:** 4194A, 4285A, 4284A, HOIKI 3541

Part Number	Lp (3-5)	Ls (2-1)	DCR (3-5)	DCR (2-1)	Cd	Cww1 (3,5)-(2,1)	SRF (2-1)	LLs (2-1) Shorted (3-5)	Turn Ratio
	<i>nH Typ</i>	<i>mH Typ</i>	<i>mΩ Typ</i>	<i>Ω Typ</i>	<i>pF Typ</i>	<i>pF Typ</i>	<i>KHz Typ</i>	<i>mH Typ</i>	<i>3-5:2-1</i>
CT05-050	2452	6.13	0.54	0.35	8.23	3.5	637.42	0.21	50
CT05-100	3374	33.74	0.58	1.35	9.12	3.6	260.75	0.69	100
CT05-200	2600	104.00	0.59	3.33	66.42	3.2	58.78	4.00	200
CT05-500	3960	990.10	0.61	15.16	136.14	3.7	16.32	16.00	500
CT05-1000	2823	2823.00	0.60	43.34	137.33	4.0	7.98	13.00	1000