

TEST CONDITIONS

Inductance:

(-A) 1 kHz , 1 Vrms , series

(-B) 17.5 kHz , 1 Vrms , series

Leakage Inductance:

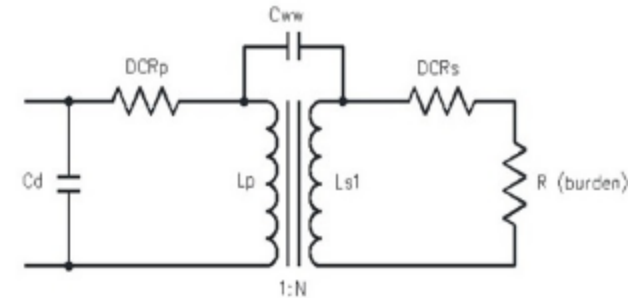
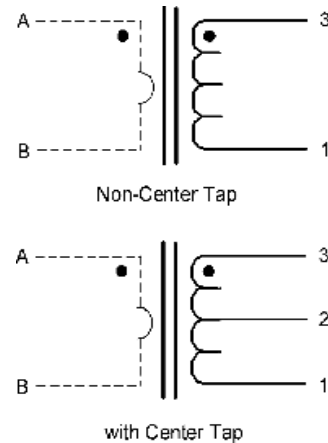
(-A) 1 kHz , 1 Vrms , series

(-B) 17.5 kHz , 1 Vrms , series

Interwinding Capacitance:

DCR: Measured at 25°C

Cd: Measured by HP4194A equivalent A on secondary



EQUIPMENTS: 4194A, 4285A, 4284A, HOIKI 3541

| Part Number | Lp (1 Turn) | Ls (S-F) | DCR | DCR (S-F) | Cd | Cww1 | SRF (S-F) | LLs (S-F) Shorted (1 Turn) | Turn Ratio |
|--------------|----------------|-------------|--------|--------------|--------|--------|--------------|-------------------------------|------------|
| | nH Typ | mH Typ | mΩ Typ | Ω Typ | pF Typ | pF Typ | kHz Typ | mH Typ | 1T:S-F |
| CT03-1000-AN | 2720 | 2720.00 | N / A | 51.91 | 90.15 | N / A | 9.55 | 896.00 | 1000 |
| CT03-1000-AC | 2740 | 2740.00 | N / A | 54.02 | 273.72 | N / A | 5.58 | 712.00 | 1000 |
| CT03-050-BN | 2928 | 7.32 | N / A | 0.52 | 10.70 | N / A | 517.42 | 0.12 | 50 |
| CT03-050-BC | 2388 | 5.97 | N / A | 0.52 | 19.76 | N / A | 432.71 | 0.08 | 50 |
| CT03-100-BN | 2791 | 27.91 | N / A | 1.11 | 14.89 | N / A | 224.66 | 0.55 | 100 |
| CT03-100-BC | 2628 | 26.28 | N / A | 1.03 | 54.86 | N / A | 127.54 | 0.47 | 100 |
| CT03-200-BN | 3113 | 124.50 | N / A | 3.28 | 72.32 | N / A | 52.17 | 1.32 | 200 |