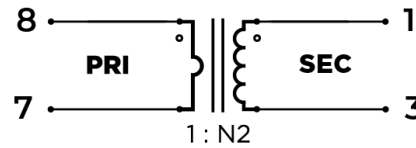


TEST CONDITIONS

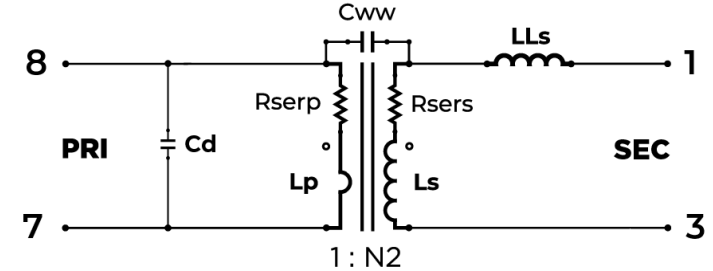
Inductance (L): 10 kHz, 0.1 V_{RMS}, Series
Leakage Inductance (LLs): 10 kHz, 0.1 V_{RMS}, Series
Interwinding Capacitance (C_{ww}): 10 kHz, 1 V_{RMS}
Series Resistance (R_{ser}): Measured at 25 °C
C_d: Measured by HP4194A equivalent A on secondary

EQUIPMENTS: 4194A, 4285A, 4284A, HOIKI 3541

SCHEMATIC SYMBOL



EQUIVALENT CIRCUIT



Part Number	L _p (8-7)	L _s (1-3)	R _{serp} (8-7)	R _{sers} (1-3)	C _d	C _{ww} (8,7) - (1,3)	S.R.F (1-3)	LLs (1-3) Shorted (8-7)	Turn Ratio
	nH, Typ.	mH, Typ.	mΩ, Typ.	Ω, Typ.	pF, Typ.	pF, Typ.	MHz, Typ.	mH, Typ.	8-7:1-3
CT01-020-R	325	0.13	4.61	0.34	0.76	2.8	19.40	0.02	1:20
CT01-030-R	322	0.29	4.55	0.50	2.67	3.0	6.51	0.02	1:30
CT01-040-R	344	0.55	4.60	0.68	9.60	3.0	2.04	0.06	1:40
CT01-050-R	328	0.82	4.59	1.21	7.87	3.2	1.86	0.09	1:50
CT01-060-R	358	1.29	4.63	1.48	7.00	4.0	1.56	0.12	1:60
CT01-070-R	333	1.63	4.59	2.69	8.59	3.1	1.30	0.17	1:70
CT01-100-R	188	1.88	4.62	5.02	11.17	3.5	1.12	0.42	1:100
CT01-125-R	239	3.74	4.66	6.24	10.17	4.1	0.81	0.72	1:125
CT01-200-R	257	10.28	4.58	29.00	17.18	3.4	0.37	1.23	1:200