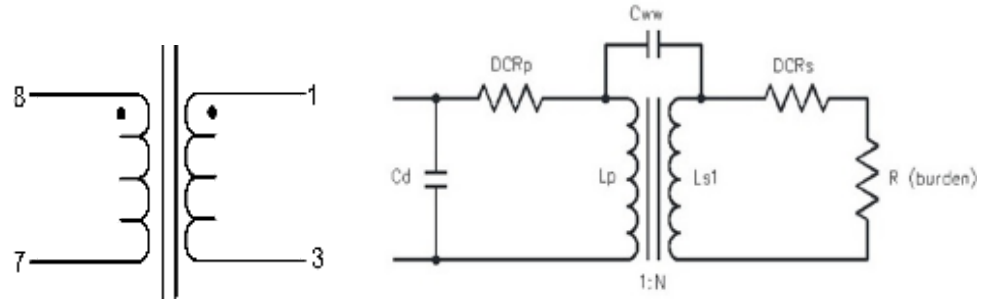


## TEST CONDITIONS

**Inductance:** 10 kHz , 0.1 Vrms , series  
**Leakage Inductance:** 10 kHz , 0.1 Vrms , series  
**Interwinding Capacitance:** 10 kHz, 1 Vrms  
**DCR:** Measured at 25 deg C  
**Cd:** Measured by HP4194A equivalent A on secondary



**EQUIPMENTS:** 4194A, 4285A, 4284A, HOIKI 3541

Part Number	Lp (8-7)	Ls (1-3)	DCR (8-7)	DCR (1-3)	Cd	Cww1 (8,7)-(1,3)	SRF (1-3)	LLs (1-3) Shorted (8-7)	Turn Ratio
	nH Typ	mH Typ	mΩ Typ	Ω Typ	pF Typ	pF Typ	MHz Typ	mHTyp	8-7:1-3
CT01-020-R	313	0.13	4.61	0.34	0.76	2.8	19.40	0.02	20
CT01-030-R	319	0.29	4.55	0.50	2.67	3.0	6.51	0.02	30
CT01-040-R	343	0.55	4.60	0.68	9.60	3.0	2.04	0.06	40
CT01-050-R	328	0.82	4.59	1.21	7.87	3.2	1.86	0.09	50
CT01-060-R	358	1.29	4.63	1.48	7.00	4.0	1.56	0.12	60
CT01-070-R	129	0.63	4.59	2.69	8.59	3.1	1.30	0.17	70
CT01-100-R	188	1.88	4.62	5.02	11.17	3.5	1.12	0.42	100
CT01-125-R	239	3.74	4.66	6.24	10.17	4.1	0.81	0.72	125
CT01-200-R	257	10.28	4.58	29.00	17.18	3.4	0.37	1.23	200